

■ DATA SHEET PROPORTIONER DZ1000 FOR MOBILE USE



■ 1. TECHNICAL DATA

Type ¹⁾	DZ1000/3/1(0,3)-M
Proportioning rates	0.3%, 1%, 3% (stepwise)
Water flow rate ²⁾	140 l/min – 1000 l/min
Operating temperature ³⁾	5 °C – 50 °C
Storage temperature	-20 °C – 80 °C
Max. operating pressure	16 bar
Weight ⁴⁾	45 kg

1) The DZ1000 meets most of the basic requirements to pressure proportioners according to DIN EN 16237. However, as it is a mobile and portable device which is not firmly installed in the vehicle, it is not covered by the scope of application of this standard.

2) The nominal proportioning rate is achieved when reaching the specified minimum figure. Indication for proportioning of fluid Newtonian foam agents at operating pressure of 5 bar.

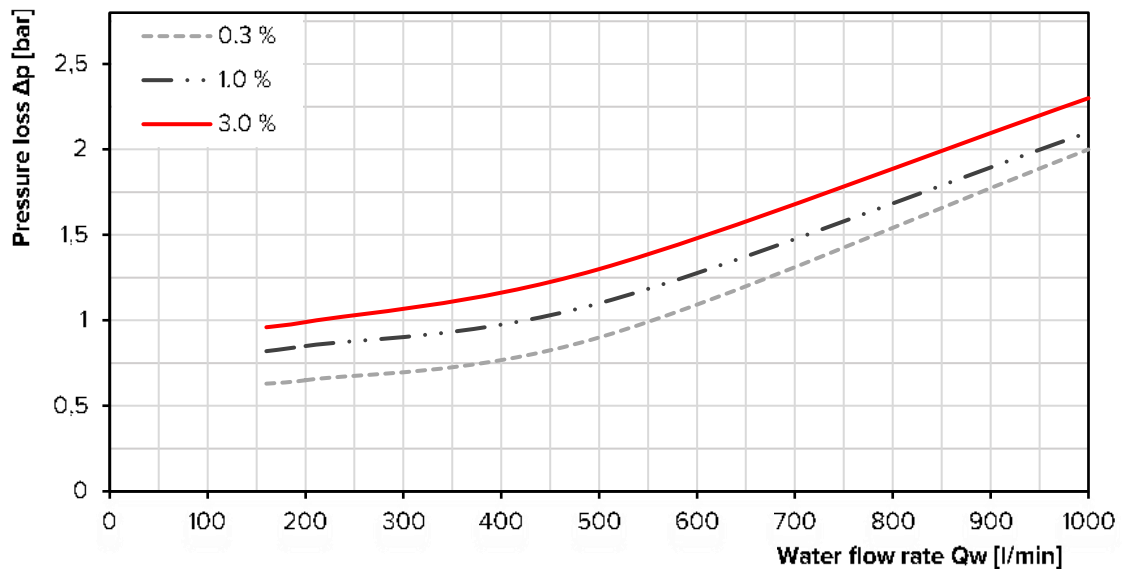
3) Operating temp. is the max. ambient and medium (foam and extinguishing water) temperature. Freezing of any fluids inside the proportioner must be avoided!

4) Weight indications are based upon the standard version in dry condition. Special versions will differ.



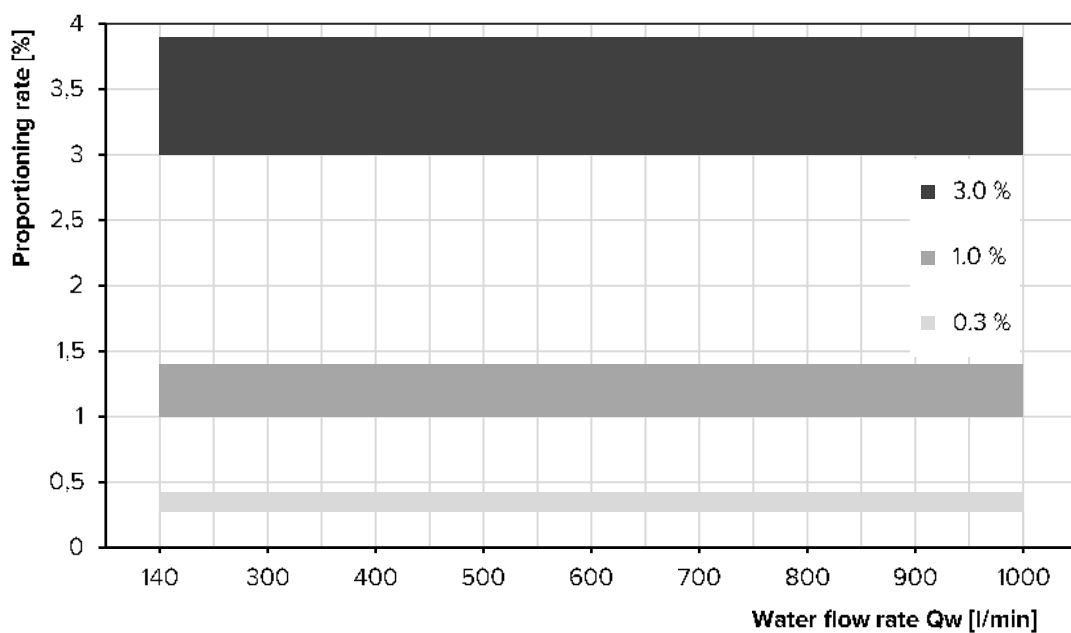
■ 2. PRESSURE LOSS

Indication valid for operating pressure of 10 bar. For more information on different system conditions, please contact us.



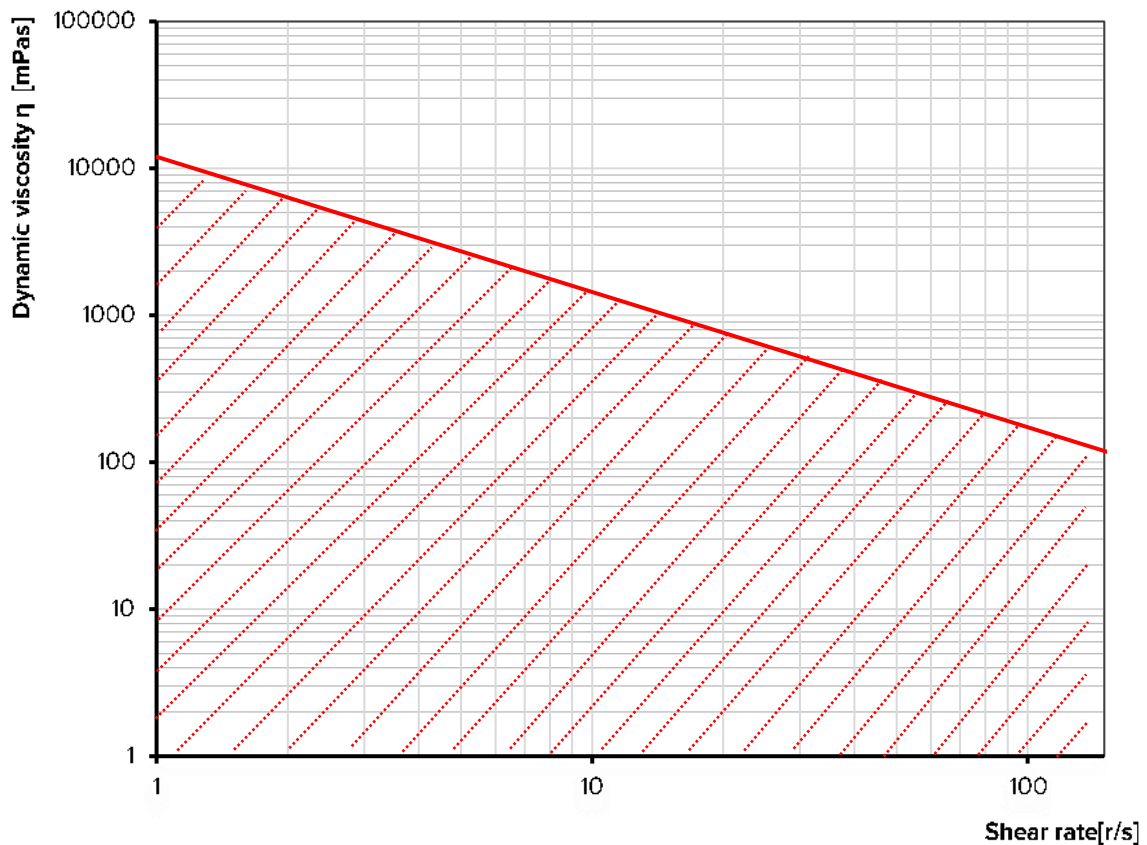
■ 3. OPERATING RANGE DIAGRAM BASED ON DIN EN 16327.

Indications based on DIN EN 16327:2014, paragraph 7.1.11, including permitted proportioning rate tolerance.



■ 4. FOAM AGENT VISCOSITY

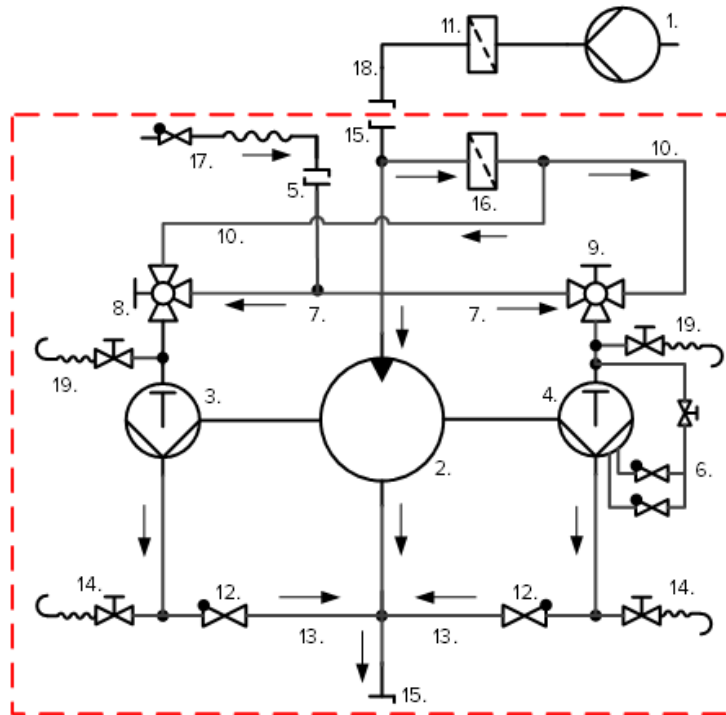
The **FireDos** proportioner DZ1000 is suitable for all foam agents up to a maximum viscosity according to the diagram below. Contact us if the dynamic viscosity of your foam agent is higher than the values in the diagram. **Do not hesitate to request our support for the correct dimensioning of your suction line.**



■ 5. MATERIALS

Water motor	Cast Aluminium G-AISi7Mg HC-coated, AlMgSi1 HC-PTFE-coated, stainless steel 316 / 316Ti, POM, PVDF, NBR, FKM
Proportioning pump	Stainless steel 316 / SS316Ti, POM, FKM, Aluminium oxide ceramic Al ₂ O ₃ , brass
Pipework	Stainless steel 316 / CF8M / SS316Ti, PTFE, FKM, nickel-plated brass

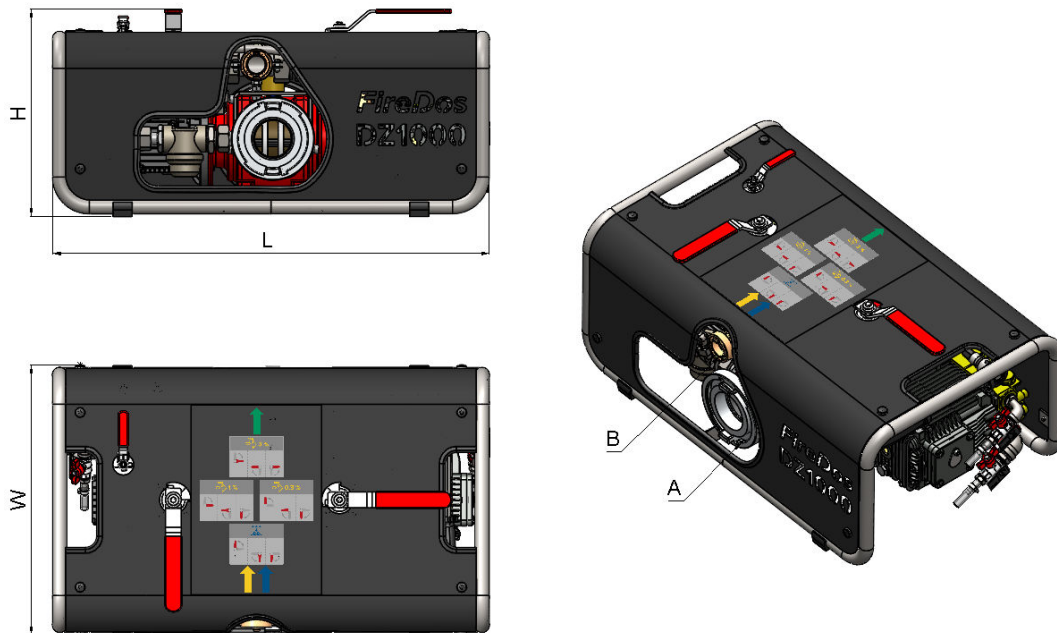
■ 6. FLOW DIAGRAM



----- Standard **FireDos** scope of supply

- | | |
|---|---|
| 1. Water supply | 11. Filter in the extinguishing water line |
| 2. Water motor | 12. Check valves in the proportioning line |
| 3. Proportioning pump 2% | 13. Pressure/proportioning lines |
| 4. Proportioning pump 1% (0,3%) | 14. Air bleed valves |
| 5. Quick coupling at suction line | 15. Quick couplings at water motor |
| 6. Cylinder cut-off to 0.3% | 16. Filter in the flushing line |
| 7. Suction line with foot valve | 17. Suction lance with check valve |
| 8. 3- way ball valve "Flushing/Priming" 2% | 18. Extinguishing water line |
| 9. 3- way ball valve "Flushing/Priming" 1% (0.3%) | 19. Drainage of pipework/proportioning pump |
| 10. Flushing lines | |

7. DIMENSIONS



Connection of water motor A	Storz 75=B-DS
Connection of suction line B	Storz 25=D-DS
Length L	665 mm
Width H	315 mm
Height W	410 mm

All figures are approximate only and depend on the particular version/equipment options.

8. MANUFACTURER

FireDos GmbH, Auf der Kaulbahn 6, 61200 Woelfersheim, Germany
Phone +49 (0) 6036 9796-0, Email: info@firedos.de

We reserve the right to make modifications at any time.